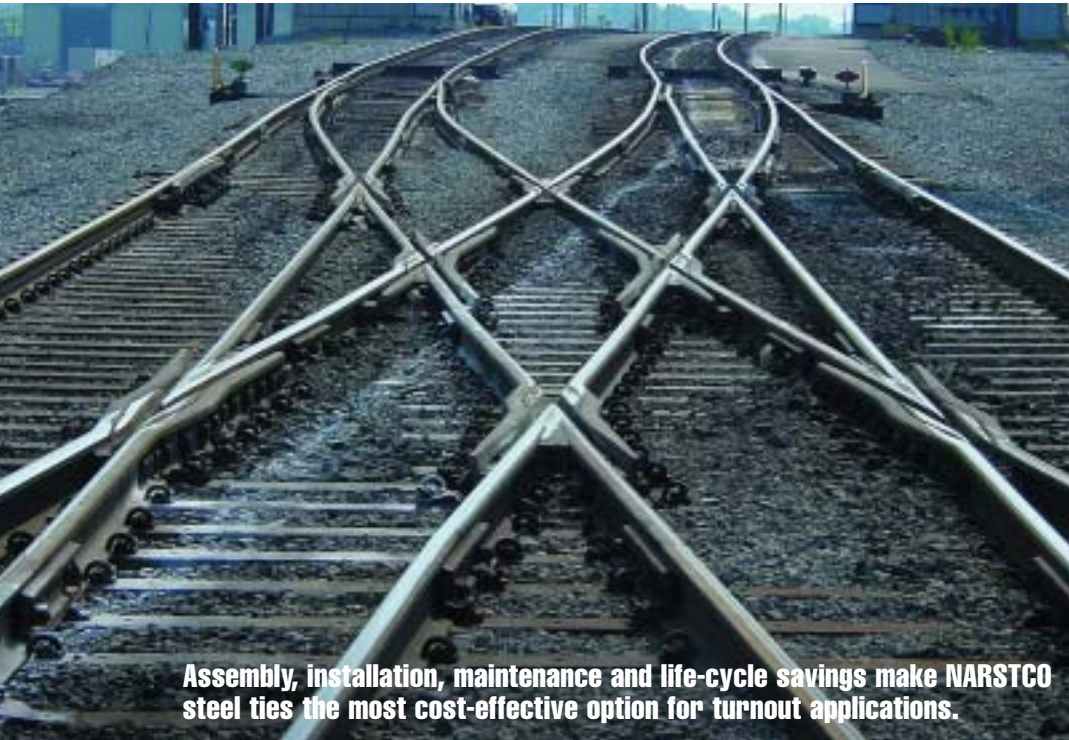


Switching to NARSTCO steel turnout tie sets will send your operating costs in the right direction



Assembly, installation, maintenance and life-cycle savings make NARSTCO steel ties the most cost-effective option for turnout applications.

With a return on investment that exceeds any alternative, high-quality NARSTCO steel turnout tie sets offer a wide range of advantages:

- available in a variety of sizes and configurations to meet all standard AREA or railroad specifications
- can be custom-designed for any turnout or related application, including crossovers, lap switches and diamond crossings
- assembly savings as high as 75 percent
- simpler and quicker to assemble and install using standard MOW equipment
- extend the life of frogs, points and rails
- minimal maintenance requirements
- maintain track gauge
- lower profile reduces required ballast by as much as 40 percent
- less expensive to transport and easier to handle than wood or concrete turnouts
- resistant to damage, corrosion and deterioration

Greater versatility, durability and longevity. It all adds up to big savings for railroads that have switched to NARSTCO steel turnout tie sets. NARSTCO steel turnouts can strengthen your bottom line. Contact us today.

NARSTCO Inc.
the North American Railway Steel Tie Corporation

John Fox, Vice President – Marketing & Sales
john.fox@narstco.com
847/488-1665 Fax: 847/741-0376

Made in America at Midlothian, Texas

www.narstco.com

