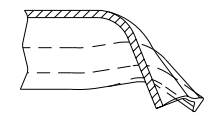
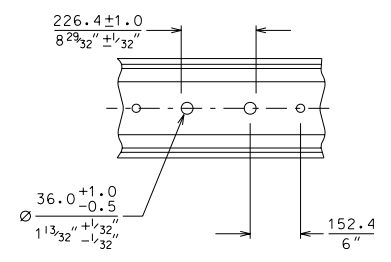


Section Properties : H10 Bar
 Cut Length : 3505mm
 Weight of bar : 30.5kg/m
 Weight of tie : 77.5kg
 Yield strength : 345 MPa (min)
 Section moduli : Z Top = 153 *10⁶ mm³
 : Z Bot = 79.7 *10⁶ mm³

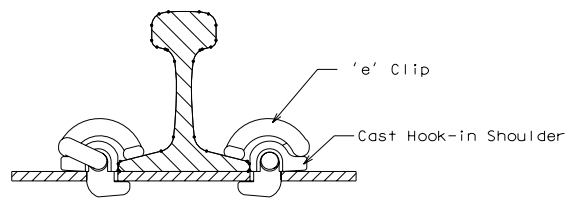
Spade End Section



Rail Seat Section



Rail Assembly



NOTE: FLAT TIE, NO CANT

THIS DRAWING AND THE OBJECTS REPRESENTED IN IT ARE THE EXCLUSIVE PROPERTY OF NARSTCO. REPRODUCTION, COPYING OR DISTRIBUTION OF THIS DRAWING OR OF THE OBJECTS IS NOT PERMITTED WITHOUT OUR WRITTEN CONSENT. THIS DRAWING MAY NOT BE USED TO CALL FOR TENDERS AND MAY NOT BE MADE AVAILABLE FOR REVIEW BY PARTIES OTHER THAN THE RECIPIENT.

NARSTCO
 NORTH AMERICAN RAILWAY STEEL TIE CORPORATION
 300 Ward Rd., Midlothian, TX USA - Phone: 972.775.5560

CLIENT		STANDARD	QWC. NO.	1044	REV.	00
DRAWN	APPROVED	DATE	TITLE		FILE	
GM		NOV 08, 2005	H10 UNINSULATED TRANSITION TIE WITH CAST HOOK-IN SHOULDERS FOR 136LB RE RAIL: 4'-8 1/2" GAUGE; NO CANT		SCALE NONE	

REV.	DATE	DESCRIPTION	BY